

KEY

- SOURCE FOUR PAR
- SOURCE FOUR 10'
- SOURCE FOUR 14'
- SOURCE FOUR AS NOTED
- 6" FRESNEL 500w
- ALTMAN 1KL ZOOM
- ALTMAN SPECTRA CYC
- COLORBLAZE T2
- PAR 16 WFL - 75w
- CHAUVET PAR
- SHOWLINE SL 155
- PRATICAL
- VARI-LITE VL1000 TSD
- MARTIN MAC 2000 PROFILE
- MARTIN MAC 700 PROFILE
- MARTIN MAC 600 NT WASH
- LED ZOOM AURA

ACCESSORIES

- SOURCE FOUR STACKER HAT
- CONCENTRIC RINGS
- 4 PANEL BARN DOOR
- CX SCROLLER
- APOLLO SCROLLER
- MAR SCROLLER
- IRIS
- DMX IRIS
- ROTATOR
- DUAL ROTATOR
- TEMPLATE
- LPRD PROJECTOR
- 1/2 CUE MOVING MIRROR
- RIGGING POINT
- BARREL ALIGNMENT
- FLOOR MOUNT PLATE

NOTATION

INST # 21

CHANNEL 15

GOBO #

DARK BASE = 750W

NOTES:

A STAR (*) AFTER NUMBER DENOTES ADDING R132 TO THE FRAME

CONFIRM BOOMADDED PIPES PLACEMENT BEFORE INSTALLATION WITH TECHNICAL DIRECTOR AND LIGHTING DESIGNER PRIOR TO INSTALLATION

PROVIDE SPARE BLACKWRAP, BLACKTAC, COLOR, L209, R132, R119, R104, AND R114 FOR POSSIBLE USE DURING FOCUS

ALL FOH ELLIPSOIDAL TO HAVE FULL FLOCKED TOPHATS

Lighting Design Copyright © 2019 by Thomas Shorrock Lighting Design.
 The designs and ideas expressed in this drawing and the related paperwork are the property of the lighting designer and may not be reproduced in any form without the advance written permission of the lighting designer. Use of this design is limited to a one time use by the producing company named in the title block of this drawing.
 All work done in the process of executing this design shall comply with all applicable city, state, and federal fire and safety codes. The lighting designer assumes no responsibility or liability for any accident or injuries incurred by anyone during the load-in, set-up, focusing, cueing, rehearsal, performance or load-out of this production. The designer is unqualified to determine the structural appropriateness of this design and will not assume responsibility for improper engineering or use.
 The Company agrees to indemnify, defend, save and hold harmless the Designer, Designer's heirs, executors, administrators and assigns from and against any and all liabilities, damages, costs, expenses, and/or other losses (including reasonable attorney's fees) arising out of Designer's performance under this Agreement.

MARK	DATE	REVISIONS/ISSUES
1		
2		
3		
4		
5		
6		
7		

FAU

DIRECTOR: Lee Soroko

Desmond Galant – Artistic Director
 Stage Manager– Emily Anzalone
 Scenic Designer–Christina Griffey
 Costume Designer–Shaye Hurst

Master Electrician–Rebecca Andros
 Technical Director–Thomas Shorrock
 777 Glades Road, Boca Raton, FL 33431 561-297-3810

URINETOWN

OVERSTAGE ELECTRICS

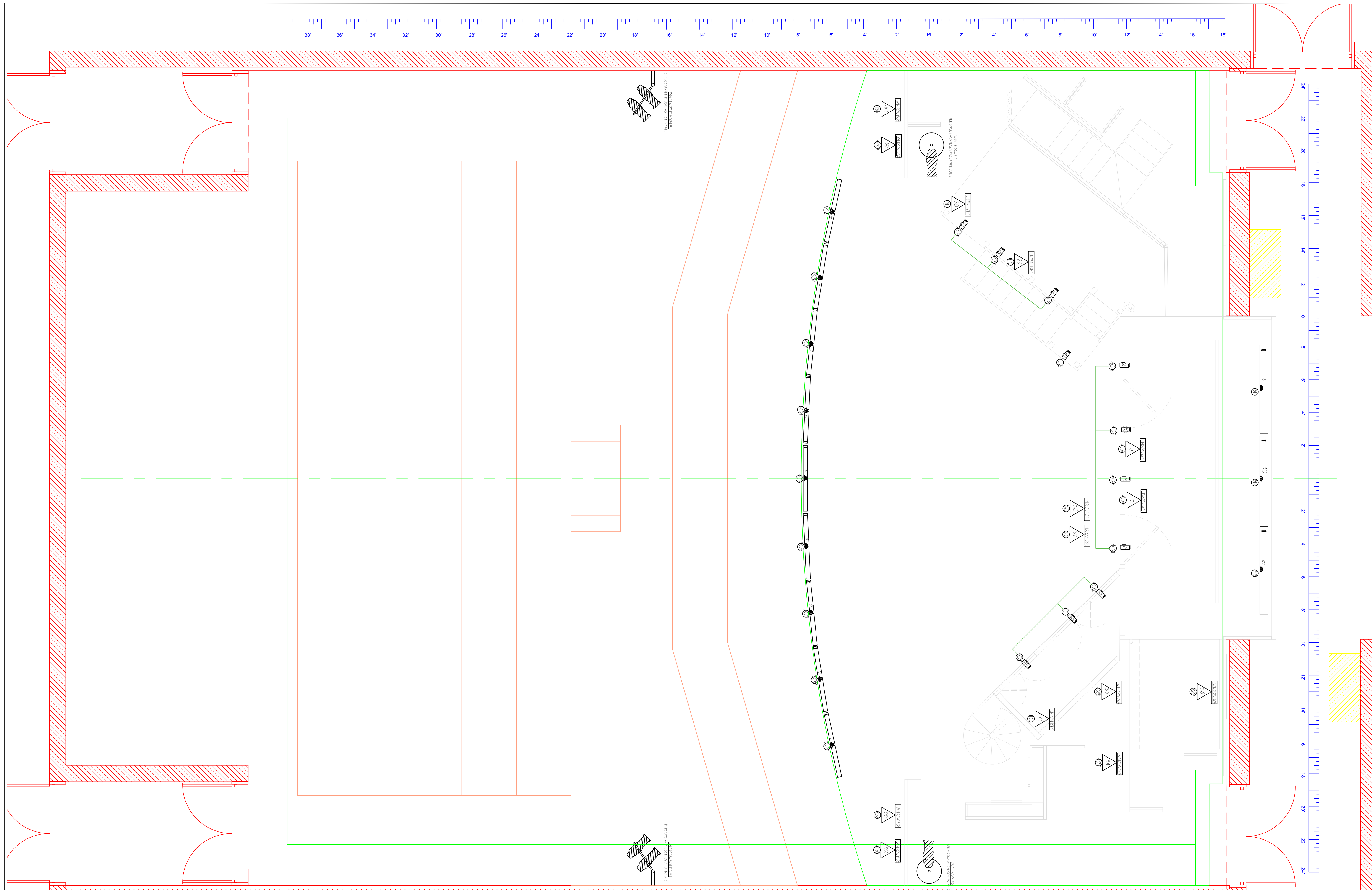
DESIGNER: THOMAS M. SHORROCK

PRELIMINARY LIGHT PLOT

THOMAS SHORROCK DESIGNS
 CELL: 561-452-0507
 EMAIL: SHORROCKT@OUTLOOK.COM

SCALE:
3/8" = 1'-0"

PLATE NUMBER
E-1



KEY

- SOURCE FOUR PAR
- SOURCE FOUR 10'
- SOURCE FOUR 14'
- SOURCE FOUR AS NOTED
- 6' FRESNEL 500w
- ALTMAN 1K1 ZOOM
- ALTMAN SPECTRA CYC
- COLORBLAZE 72
- PAR 16 WFL - 75w
- CHAUVET PAR
- SHOWLINE SL 155
- PRACTICAL
- VARILITE VL1000 TSD
- MARTIN MAC 2000 PROFILE
- MARTIN MAC 700 PROFILE
- MARTIN MAC 600 NT WASH
- LED ZOOM AURA

ACCESSORIES

- SOURCE FOUR STACKER HAT
- CONCENTRIC RINGS
- 4 PANEL BARN DOOR
- CX SCROLLER
- APOLLO SCROLLER
- MXR SCROLLER
- IRIS
- DMX IRIS
- ROTATOR
- DUAL ROTATOR
- TEMPLATE
- LPRD PROJECTOR
- 1 CUE MOVING MIRROR
- RIGGING POINT
- BARREL ALIGNMENT
- FLOOR MOUNT PLATE

NOTATION

INST # 21

CHANNEL 15

NOTES:

- A STAR (*) AFTER NUMBER DENOTES ADDING R132 TO THE FRAME
- CONFIRM BOOMADDED PIPES PLACEMENT BEFORE INSTALLATION WITH TECHNICAL DIRECTOR AND LIGHTING DESIGNER PRIOR TO INSTALLATION
- PROVIDE SPARE BLACKWRAP, BLACKTAC, COLOR, L209, R132, R119, R104, AND R114 FOR POSSIBLE USE DURING FOCUS
- ALL FOH ELLIPSOIDAL TO HAVE FULL FLOCKED TOPHATS

Lighting Design Copyright © 2019 by Thomas Shorrock Lighting Design.
 The designs and ideas expressed in this drawing and the related paperwork are the property of the lighting designer and may not be reproduced in any form without the advance written permission of the lighting designer. Use of this design is limited to a one time use by the producing company named in the title block of this drawing.
 All work done in the process of executing this design shall comply with all applicable city, state, and federal fire and safety codes. The lighting designer assumes no responsibility or liability for any accident or injuries incurred by anyone during the load-in, set-up, focusing, cueing, rehearsal, performance or load-out of this production. The designer is unqualified to determine the structural appropriateness of this design and will not assume responsibility for improper engineering or use.
 The Company agrees to indemnify, defend, save and hold harmless the Designer, Designer's heirs, executors, administrators and assigns from and against any and all liabilities, damages, costs, expenses, and/or other losses (including reasonable attorney's fees) arising out of Designer's performance under this Agreement.

MARK	DATE	REVISIONS/ISSUES
1		
2		
3		
4		
5		
6		
7		

FAU

DIRECTOR: Lee Soroko

Desmond Galant – Artistic Director
 Stage Manager– Emily Anzalone
 Scenic Designer–Christina Griffey
 Costume Designer–Shaye Hurst

Master Electrician–Rebecca Andros
 Technical Director–Thomas Shorrock
 777 Glades Road, Boca Raton, FL 33431 561-297-3810

URINETOWN

OVERSTAGE ELECTRICS

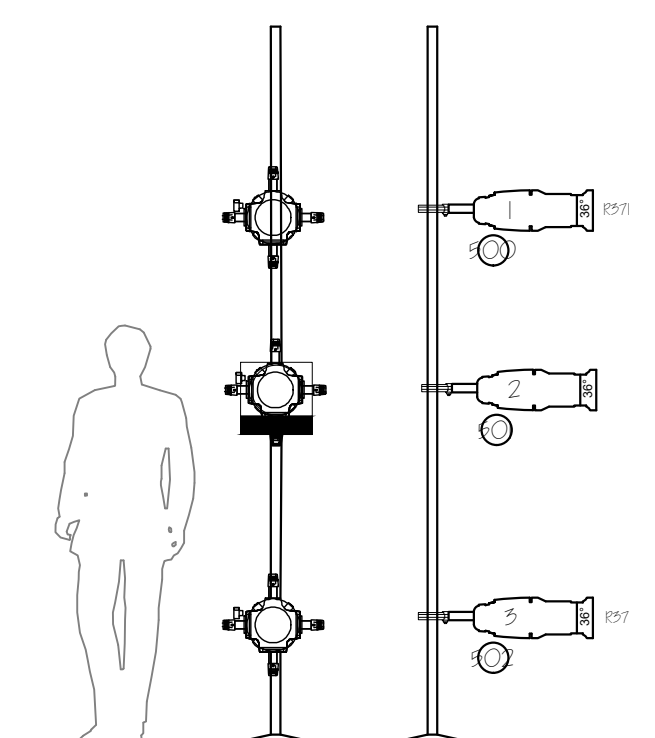
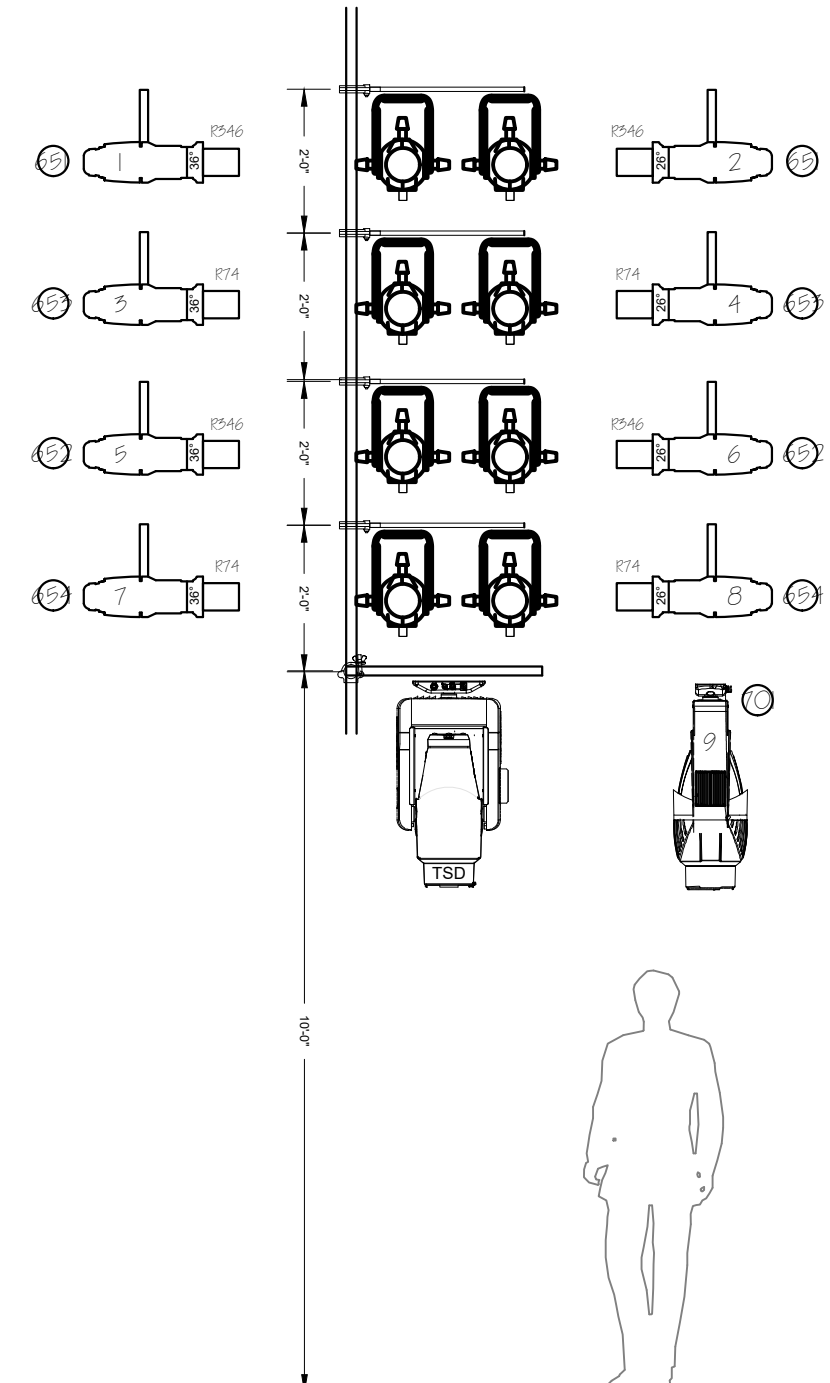
DESIGNER: THOMAS M. SHORROCK

PRELIMINARY LIGHT PLOT

THOMAS SHORROCK DESIGNS
 CELL: 561-452-0507
 EMAIL: SHORROCKT@OUTLOOK.COM

SCALE:
3/8" = 1'-0"

PLATE NUMBER
E-2



DOWNSTAGE FRONT UPSTAGE

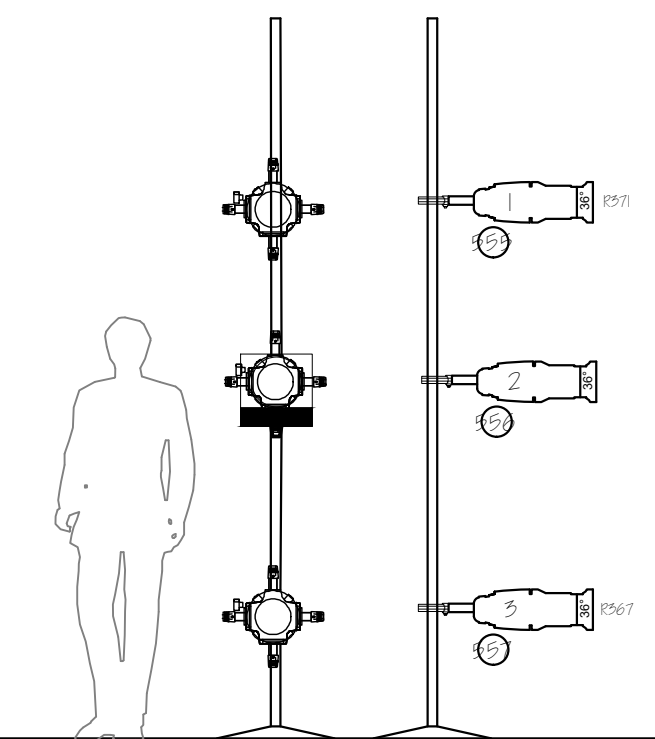
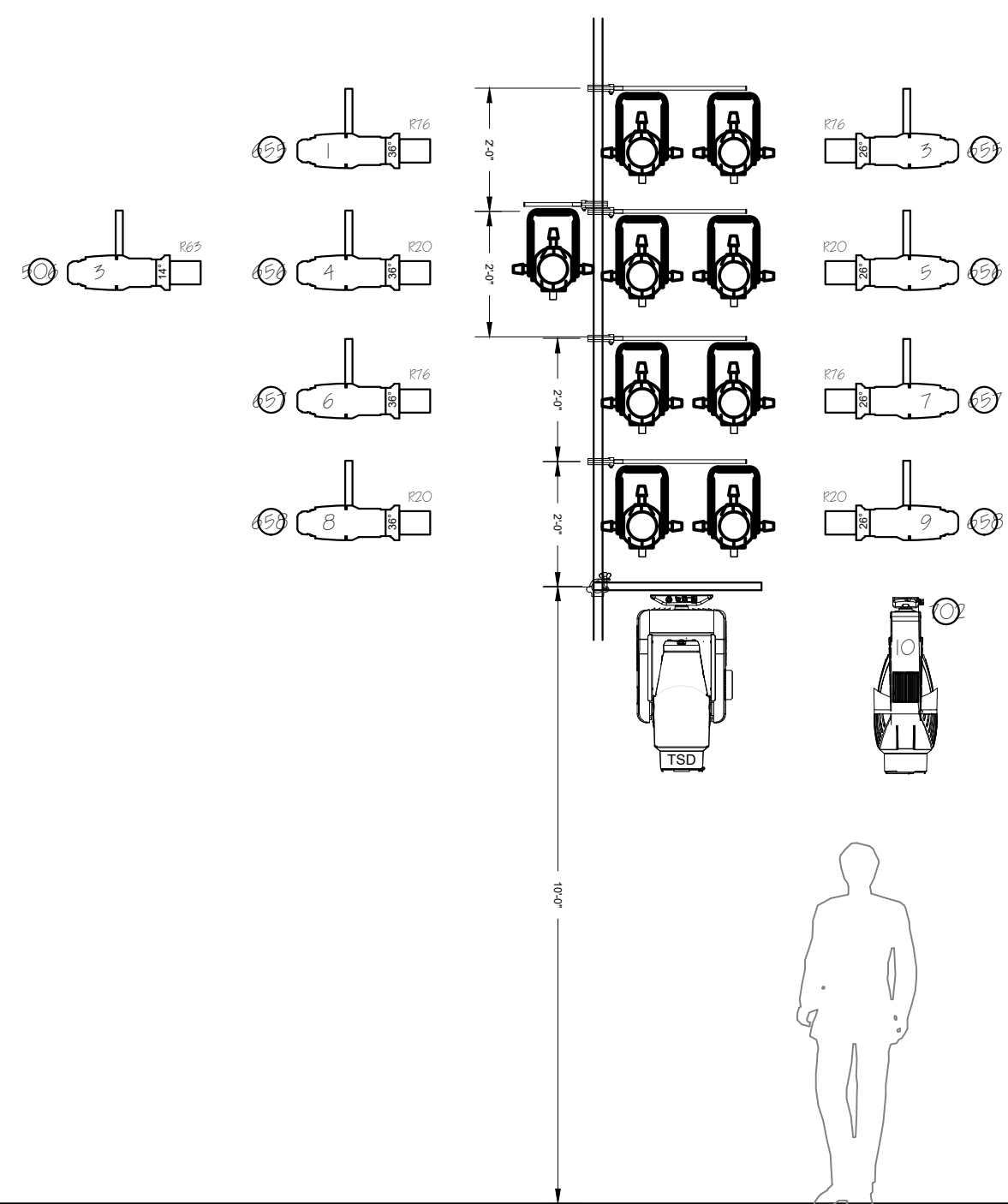
WEST BOOM #2

- UNITS ARE MOUNTED TO 24" SAFER SIDEARMS
- ATTACH TO WALL WITH KEE CLAMP BOOM
- SEE PAPERWORK FOR TWOFER ARRANGEMENT

FRONT UPSTAGE

WEST BOOM #2

USE FLOOR BOOM PLATE TO CREATE



DOWNSTAGE FRONT UPSTAGE

EAST BOOM #1

- UNITS ARE MOUNTED TO 24" SAFER SIDEARMS
- ATTACH TO WALL WITH KEE CLAMP BOOM
- SEE PAPERWORK FOR TWOFER ARRANGEMENT

FRONT UPSTAGE

EAST BOOM #1

USE FLOOR BOOM PLATE TO CREATE

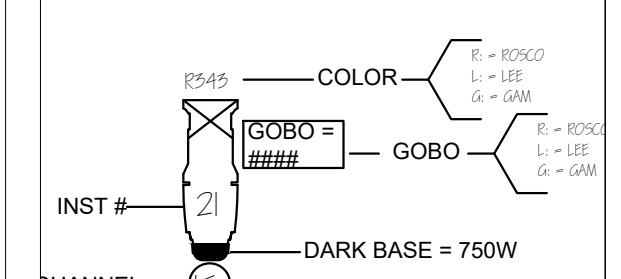
KEY

- SOURCE FOUR PAR
- SOURCE FOUR 10"
- SOURCE FOUR 14"
- SOURCE FOUR AS NOTED
- 6" FRESNEL 500w
- ALTMAN 1KL ZOOM
- ALTMAN SPECTRA CYC
- COLORBLAZE T2
- PAR 16 WFL - 75w
- CHAUVET PAR
- SHOWLINE SL 155
- PRATICAL
- VARI-LITE VL1000 TSD
- MARTIN MAC 2000 PROFILE
- MARTIN MAC 700 PROFILE
- MARTIN MAC 600 NT WASH
- LED ZOOM AURA

ACCESSORIES

- SOURCE FOUR STACKER HAT
- CONCENTRIC RINGS
- 4 PANEL BARN DOOR
- CX SCROLLER
- APOLLO SCROLLER
- MAR SCROLLER
- IRIS
- DMX IRIS
- ROTATOR
- DUAL ROTATOR
- TEMPLATE
- LPRO PROJECTOR
- CUE MOVING MIRROR
- RIGGING POINT
- BARREL ALIGNMENT
- FLOOR MOUNT PLATE

NOTATION



NOTES:
 A STAR (*) AFTER NUMBER DENOTES ADDING R132 TO THE FRAME
 CONFIRM BOOM/ADDED PIPES PLACEMENT BEFORE INSTALLATION WITH TECHNICAL DIRECTOR AND LIGHTING DESIGNER PRIOR TO INSTALLATION
 PROVIDE SPARE BLACKWRAP, BLACKTAC, COLOR, L209, R132, R119, R104, AND R114 FOR POSSIBLE USE DURING FOCUS
 ALL FOH ELLIPSOIDAL TO HAVE FULL FLOCKED TOPHATS

Lighting Design Copyright © 2019 by Thomas Shorrock Lighting Design.
 The designs and ideas expressed in this drawing and the related paperwork are the property of the lighting designer and may not be reproduced in any form without the advance written permission of the lighting designer. Use of this design is limited to a one time use by the producing company named in the title block of this drawing.
 All work done in the process of executing this design shall comply with all applicable city, state, and federal fire and safety codes. The lighting designer assumes no responsibility or liability for any accident or injuries incurred by anyone during the load-in, set-up, focusing, cueing, rehearsal, performance or load-out of this production. The designer is unqualified to determine the structural appropriateness of this design and will not assume responsibility for improper engineering or use.
 The Company agrees to indemnify, defend, save and hold harmless the Designer, Designer's heirs, executors, administrators and assigns from and against any and all liabilities, damages, costs, expenses, and/or other losses (including reasonable attorney's fees) arising out of Designer's performance under this Agreement.

MARK	DATE	REVISIONS/ISSUES
1		
2		
3		
4		
5		
6		
7		



DIRECTOR: Lee Soroko
 Desmond Galant – Artistic Director
 Stage Manager– Emily Anzalone
 Scenic Designer–Christina Griffey
 Costume Designer–Shaye Hurst
 Master Electrician–Rebecca Andros
 Technical Director–Thomas Shorrock
 777 Glades Road, Boca Raton, FL 33431 561-297-3810

URINETOWN		PLATE NUMBER E-3
OVERSTAGE ELECTRICS		
DESIGNER: THOMAS M. SHORROCK		SCALE: 3/8" = 1'-0"
PRELIMINARY LIGHT PLOT		
THOMAS SHORROCK DESIGNS CELL: 561-452-0507 EMAIL: SHORROCKT@OUTLOOK.COM		