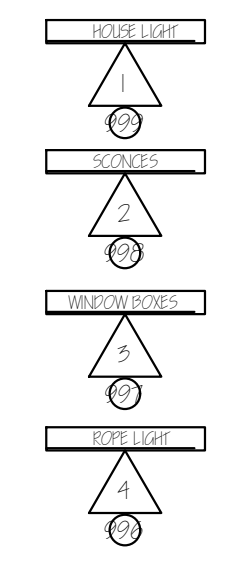


KEY

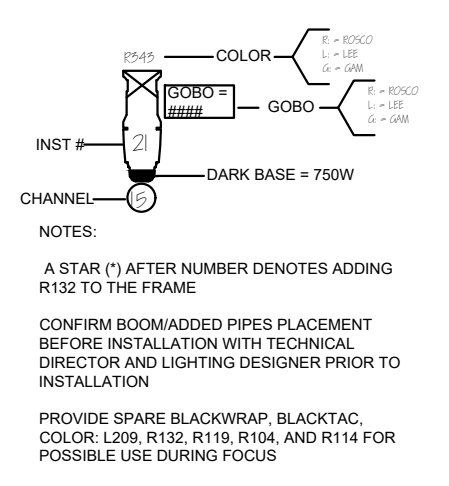
- SOURCE FOUR PAR
- SOURCE FOUR AS NOTED
- PRACTICAL
- COLORBLAZE 72



ACCESSORIES

- SOURCE FOUR STACKER HAT
- CONCENTRIC RINGS
- 4 PANEL BARN DOOR
- CXI SCROLLER
- APOLO SCROLLER
- MXR SCROLLER
- IRIS
- DMX IRIS
- ROTATOR
- DUAL ROTATOR
- TEMPLATE
- I-PRO PROJECTOR
- I-CUE MOVING MIRROR
- RIGGING POINT
- BARREL ALIGNMENT
- FLOOR MOUNT PLATE

NOTATION



GENERAL PLOT NOTES

- REFER TO PAPERWORK FOR ALL COLOR AND ACCESSORY INFORMATION
- BOOM POSITIONS & ADDED PIPE POSITIONS MUST BE SECURED AND STIFFENED TO PREVENT MOVEMENT
- MEASUREMENTS ON FOH POSITIONS, TRIM HEIGHTS, AND BOOM ELEVATION CALL-OUTS ARE FROM **VENUE DECK** TO SIDE ARM OR HANGING POSITION **UNLESS** OTHERWISE INDICATED
- ALIGN ALL ELLIPSOIDS PRIOR TO HANG
- ALL HANGING ELECTRICS TO RECEIVE FINAL TRIM AT FOCUS. DO NOT CHAIN OFF OR TIE OFF BEFORE FOCUS IS COMPLETE
- STIFFEN ALL LIGHTING BOOMS AND ELECTRICS
- PROVIDE SPARE CIRCUITS AT ALL POSITIONS WHENEVER POSSIBLE
- SINGLE CIRCUIT WHENEVER POSSIBLE
- ALL TEMPLATED UNITS TO HAVE DONUTS
- PROVIDE ADEQUATE WORKLIGHT TO BE CONTROLLED BY STAGE MANAGEMENT

Lighting Design Copyright © 2019 by Thomas Shorrock Lighting Design.
 The designs and ideas expressed in this drawing and the related paperwork are the property of the lighting designer and may not be reproduced in any form without the advance written permission of the lighting designer. Use of this design is limited to a one time use by the producing company named in the title block of this drawing.
 All work done in the process of executing this design shall comply with all applicable city, state, and federal fire and safety codes. The lighting designer assumes no responsibility or liability for any accident or injuries incurred by anyone during the load-in, set-up, focusing, cueing, rehearsal, performance or load-out of this production. The designer is unqualified to determine the structural appropriateness of this design and will not assume responsibility for improper engineering or use.
 The Company agrees to indemnify, defend, save and hold harmless the Designer, Designer's heirs, executors, administrators and assigns from and against any and all liabilities, damages, costs, expenses, and/or other losses (including reasonable attorney's fees) arising out of Designer's performance under this Agreement.

MARK	DATE	REVISIONS/ISSUES
1		
2		
3		
4		
5		
6		
7		

Joseph Adler-Director

Stage Manager-- Katie Ellison
 Technical Director--Carolos Lopez
 Scenic Designer--Lyle Baskin
 Costume Designer--Emil White
 Master Electrician--

KINGS

STAGE LIGHTING PLOT

DESIGNER: THOMAS M. SHORROCK

PRELIMINARY LIGHT PLOT

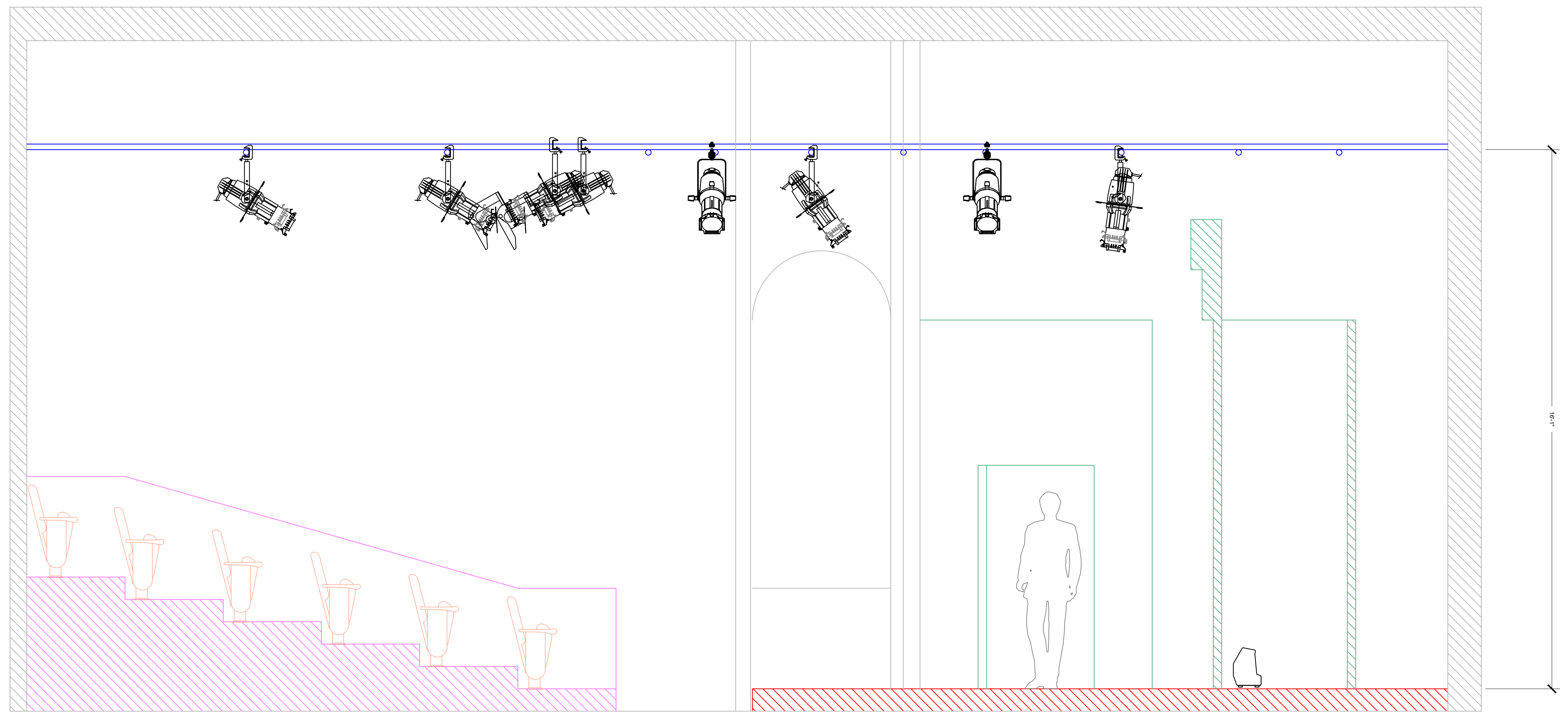
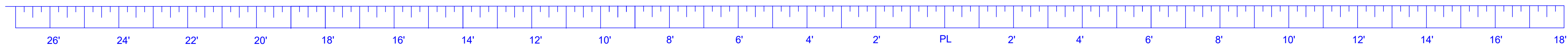
THOMAS SHORROCK DESIGNS
 CELL: 561-452-0507
 EMAIL: SHORROCK1@GMAIL.COM

PLATE NUMBER

E-1

SCALE:

3/8" = 1'-0"



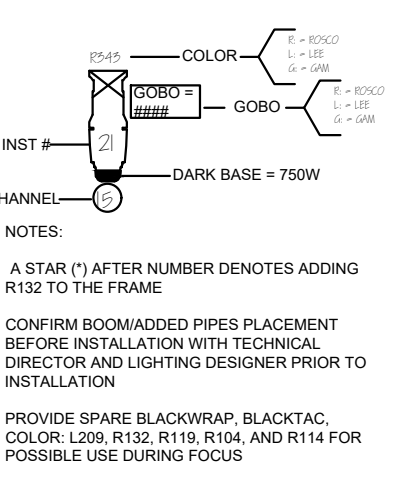
KEY

- SOURCE FOUR PAR
- SOURCE FOUR AS NOTED
- PRACTICAL
- COLORBLAZE 72

ACCESSORIES

- SOURCE FOUR STACKER HAT
- CONCENTRIC RINGS
- 4 PANEL BARN DOOR
- CXI SCROLLER
- APOLO SCROLLER
- MXR SCROLLER
- IRIS
- DMX IRIS
- ROTATOR
- DUAL ROTATOR
- TEMPLATE
- I-PRO PROJECTOR
- I-CUE MOVING MIRROR
- RIGGING POINT
- BARREL ALIGNMENT
- FLOOR MOUNT PLATE

NOTATION



- GENERAL PLOT NOTES**
- REFER TO PAPERWORK FOR ALL COLOR AND ACCESSORY INFORMATION
 - BOOM POSITIONS & ADDED PIPE POSITIONS MUST BE SECURED AND STIFFENED TO PREVENT MOVEMENT
 - MEASUREMENTS ON FOH POSITIONS, TRIM HEIGHTS, AND BOOM ELEVATION CALL-OUTS ARE FROM **VENUE DECK** TO SIDE ARM OR HANGING POSITION **UNLESS** OTHERWISE INDICATED
 - ALIGN ALL ELLIPSOIDS PRIOR TO HANG
 - ALL HANGING ELECTRICS TO RECEIVE FINAL TRIM AT FOCUS. DO NOT CHAIN OFF OR TIE OFF BEFORE FOCUS IS COMPLETE
 - STIFFEN ALL LIGHTING BOOMS AND ELECTRICS
 - PROVIDE SPARE CIRCUITS AT ALL POSITIONS
 - SINGLE CIRCUIT WHENEVER POSSIBLE
 - ALL TEMPLATED UNITS TO HAVE DONUTS
 - PROVIDE ADEQUATE WORKLIGHT TO BE CONTROLLED BY STAGE MANAGEMENT

Lighting Design Copyright © 2019 by Thomas Shorrock Lighting Design.
 The designs and ideas expressed in this drawing and the related paperwork are the property of the lighting designer and may not be reproduced in any form without the advance written permission of the lighting designer. Use of this design is limited to a one time use by the producing company named in the title block of this drawing.
 All work done in the process of executing this design shall comply with all applicable city, state, and federal fire and safety codes. The lighting designer assumes no responsibility or liability for any accident or injuries incurred by anyone during the load-in, set-up, focusing, cueing, rehearsal, performance or load-out of this production. The designer is unqualified to determine the structural appropriateness of this design and will not assume responsibility for improper engineering or use.
 The Company agrees to indemnify, defend, save and hold harmless the Designer, Designer's heirs, executors, administrators and assigns from and against any and all liabilities, damages, costs, expenses, and/or other losses (including reasonable attorney's fees) arising out of Designer's performance under this Agreement.

MARK	DATE	REVISIONS/ISSUES
1		
2		
3		
4		
5		
6		
7		

Joseph Adler-Director

Stage Manager- Katie Ellison
 Technical Director-Carlos Lopez
 Scenic Designer-Lyle Baskin
 Costume Designer-Emil White
 Master Electrician-

1200 Anastasia Ave #230, Coral Gables FL 33134 305.445.1119

KINGS

SECTION THROUGH CENTERLINE

DESIGNER: THOMAS M. SHORROCK

PRELIMINARY LIGHT PLOT

THOMAS SHORROCK DESIGNS
 CELL: 561-452-0607
 EMAIL: SHORROCK1@BELL5OUTH.NET

SCALE:
1/2" = 1'-0"

PLATE NUMBER
E-2